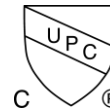


THIS SPACE FOR DESIGNER/ENGINEER APPROVAL

Job/Customer _____	Date _____	Contractor _____
Model Specified _____	Qty _____	Approved By _____
Designer/Engineer _____	Date _____	Contractor's PO# _____
Submitted by _____	Date _____	Other _____

H-2692W Series

1/4 Turn Supply Stops Straight
Push x OD Comp ISO 9001

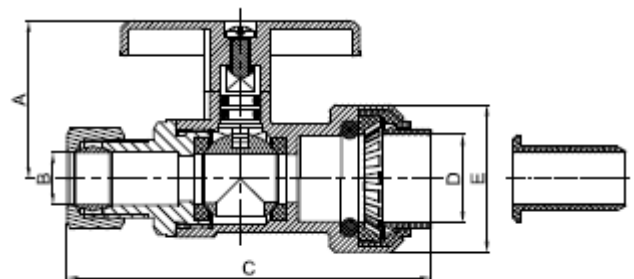
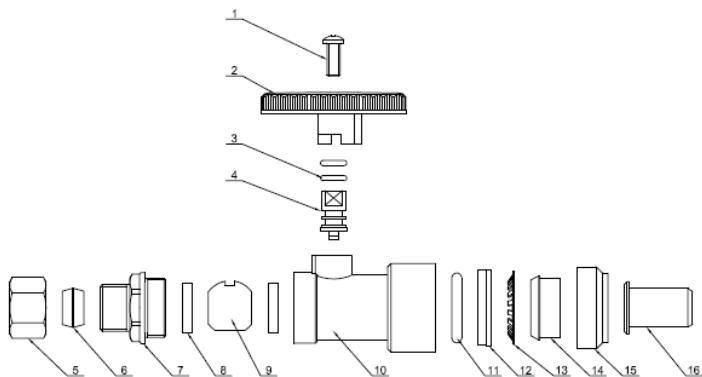


Lead free products are certified to NSF/ANSI 61-G & IGC 157

ITEM #	SIZE	CTN	CASE	A	B	C	D	E
26920W	1/2" x 1/4"	20	200	1 1/8	1/4	2 9/16	1/2	1 1/16
26921W	1/2" x 3/8"	20	200	1 3/16	3/8	2 7/8	1/2	1 1/16



NO.	DESCRIPTION	MATERIAL
1	BOLT	STAINLESS STEEL
2	HANDLE	ALUMINUM
3	O RING	NBR
4	STEM	BRASS
5	UNION NUT	LEAD FREE BRASS
6	CRIMP	BRASS
7	BONNET	LF BRASS
8	SEATS	PTFE
9	BALL	LF BRASS
10	BODY	LF BRASS
11	O RING	EPDM
12	PROTECTOR	PLASTIC
13	GRIP RING	STAINLESS STEEL
14	COLLAR	PLASTIC
15	RELEASE RING	PLASTIC
16	INNER LINER	PLASTIC



Specifications: Designed for residential, commercial or industrial use with water, specifically for use in copper, PEX, and CPVC systems. This valve features a fully removable grip assembly, ideal for use in potable water and hydronic heating systems.



Quality and Commitment Since 1954

www.webstonevalves.com • P: (800) 225-9529 • F: (800) 336-5133

Webstone product specifications in U.S. customary units are approximate and are provided for reference only. Webstone reserves the right to change or modify product design, construction, specifications or materials without prior notice and without incurring any obligation to make such changes and modifications on Webstone products previously or subsequently sold.

2692Spec_082013