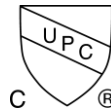


THIS SPACE FOR DESIGNER/ENGINEER APPROVAL

Job/Customer _____	Date _____	Contractor _____
Model Specified _____	Qty _____	Approved By _____
Designer/Engineer _____	Date _____	Contractor's PO# _____
Submitted by _____	Date _____	Other _____

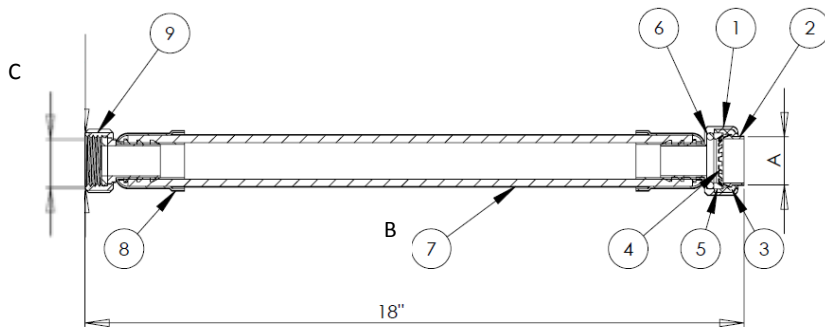
2602W Series
Flexible Water Heater Connectors
Braided Stainless Steel
For Connection to Copper, CPVC, or PEX
Lead Free
Push x FIP
200 PSI / 200°F Max



Certified to
 ASME A112.18.6/CSA B125.6
 & NSF/ANSI 61-G



Item_ID	Size	Carton Qty	Case Qty	A	B	C
H-26023W-12-B	1/2 × 3/4	12	60	0.5	12	0.75
H-26023W-15-B	1/2 × 3/4	12	60	0.5	15	0.75
H-26023W-18	1/2 × 3/4	1	50	0.5	18	0.75
H-26023W-24-B	1/2 × 3/4	12	60	0.5	24	0.75
H-26033W-12	3/4	1	50	0.75	12	0.75
H-26033W-15	3/4	1	50	0.75	15	0.75
H-26033W-18	3/4	1	50	0.75	18	0.75
H-26033W-24	3/4	1	50	0.75	24	0.75



NO.	DESCRIPTION	MATERIAL
1	END CAP	LF BRASS
2	RELEASE RING	PLASTIC
3	CARTRIDGE RING	PLASTIC
4	GRIP RING	STAINLESS STEEL
5	PROTECTOR RING	PLASTIC
6	O-RING	EPDM
7	FLEXIBLE HOSE	BRAIDED STAINLESS STEEL/EPDM
8	FERRULE	STAINLESS STEEL
9	NUT	LF BRASS

TEMP °F	PSI
100	200
150	200
200	200
250	N/A
300	N/A
350	N/A
366	N/A

Specifications: Designed for residential, commercial or industrial use with water, specifically for use in copper, CPCV, or PEX systems. This product features a fully removable grip assembly. Threaded ends comply with ANSI B1.20.1.



Quality and Commitment Since 1954

www.webstonevalves.com · P: (800) 225-9529 · F: (800) 336-5133

Webstone product specifications in U.S. customary units are approximate and are provided for reference only. Webstone reserves the right to change or modify product design, construction, specifications or materials without prior notice and without incurring any obligation to make such changes and modifications on Webstone products previously or subsequently sold.