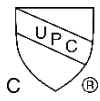




8161 Series

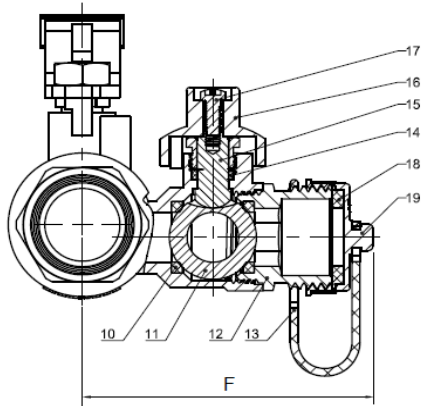
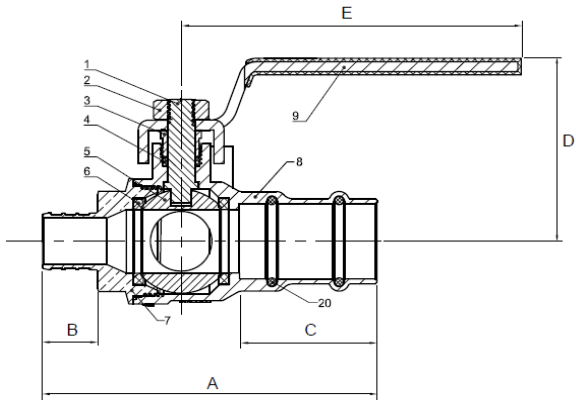
Pro-Pal Ball Drain
Full Port Forged Dezincification Resistant Brass Ball Valve
w/ Hi-Flow Hose Drain,
Reversible Handle,
& Adjustable Packing Glands
Press x ASTM F1807 PEX
Max Operating Pressure: 250 CWP
Certified to NSF/ANSI 61 & 372, NSF/ANSI 14 & IAPMO ANSI Z1157
ISO 9001



ITEM#	SIZE (in)	CTN	CASE	A	B	C	D	E	F
H-81612W	1/2	4	40	3.44	0.65	1.38	2.29	3.37	2.98
H-81613W	3/4	4	32	3.86	0.65	1.57	2.61	3.37	2.89
H-81614W	1	2	20	4.45	0.82	1.57	2.64	4.65	3.06



Designed for residential, commercial or industrial use with water, oil or gas. This approved Webstone valve is actuated by a blowout proof stem and features an adjustable packing gland. PEX end dimensions comply with ASTM F1807



NO.	DESCRIPTION	MATERIAL
1	Stem	Lead Free Brass
2	Handle Nut	Stainless Steel
3	Packing Gland	Brass
4	Stem Seal	PTFE
5	Ball	Lead Free Brass
6	Seats	PTFE
7	End Cap	Lead Free Brass
8	Body	Lead Free Brass
9	Handle	Chrome Plated Steel
10	Drain Seats	PTFE
11	Drain Ball	Lead Free Brass
12	Drain End Cap	Lead Free Brass
13	Cover Strap	PVC
14	Drain Stem Seal	PTFE
15	Drain Stem	Lead Free Brass
16	Drain Handle	Enamel Coated Aluminum
17	Drain Handle Screw	Stainless Steel
18	Drain Cover Seal	EPDM
19	Drain Cover	Brass
20	O-Ring	EPDM