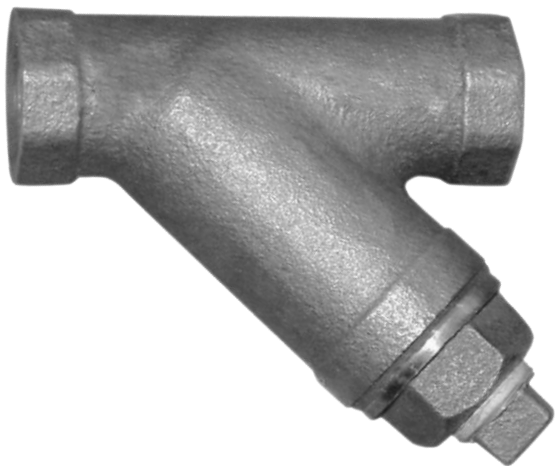


**THIS SPACE FOR DESIGNER/ENGINEER APPROVAL**

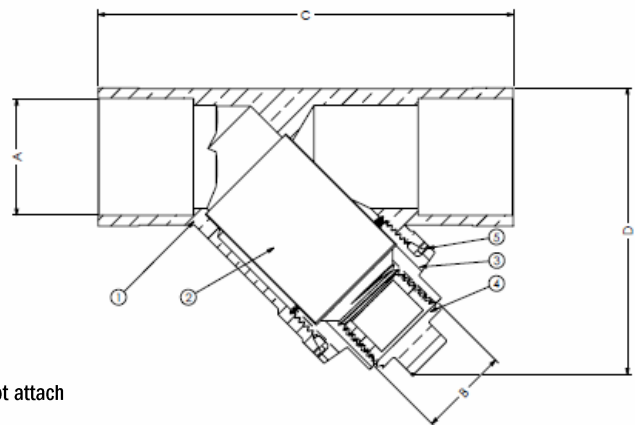
Job/Customer _____	Date _____	Contractor _____
Model Specified _____	Qty _____	Approved By _____
Designer/Engineer _____	Date _____	Contractor's PO# _____
Submitted By _____	Date _____	Other _____

**1056 Series**  
**Bronze Wye Strainer**  
**20 Mesh Screen**  
**IPS**  
**300 WOG / 150 WSP**  
**ISO 9001**

ITEM #	SIZE	CTN	CASE	A	B	C	D
10562	1/2"	12	60	1/2	1/2	3 3/16	2 7/8
10563	3/4"	8	48	3/4	1/2	3 7/8	3 3/8
10564	1"	8	32	1	1/2	4 1/2	4
10565	1 1/4"	8	32	1 1/4	1/2	5 5/16	4 1/2
10566	1 1/2"	2	16	1 1/2	1/2	6 3/16	5
10567	2"	2	8	2	1/2	7 1/2	6 1/4



NO.	DESCRIPTION	MATERIAL
1	Body	BRONZE
2	Screen	STAINLESS STEEL
3	End Cap	BRONZE
4	Plug	BRONZE
5	Gasket	FIBRE



**Note:** Plug and end cap should be removed for drainage and screen cleaning only. Do not attach lines or fittings.

**Specifications:** Designed for residential, commercial or industrial use with water oil or gas. Threaded ends comply with ANSI B1.20.1.



Quality and Commitment Since 1954

www.webstonevalves.com · P: (800) 225-9529 · F: (800) 336-5133

Webstone product specifications in U.S. customary units are approximate and are provided for reference only. Webstone reserves the right to change or modify product design, construction, specifications or materials without prior notice and without incurring any obligation to make such changes and modifications on Webstone products previously or subsequently sold.